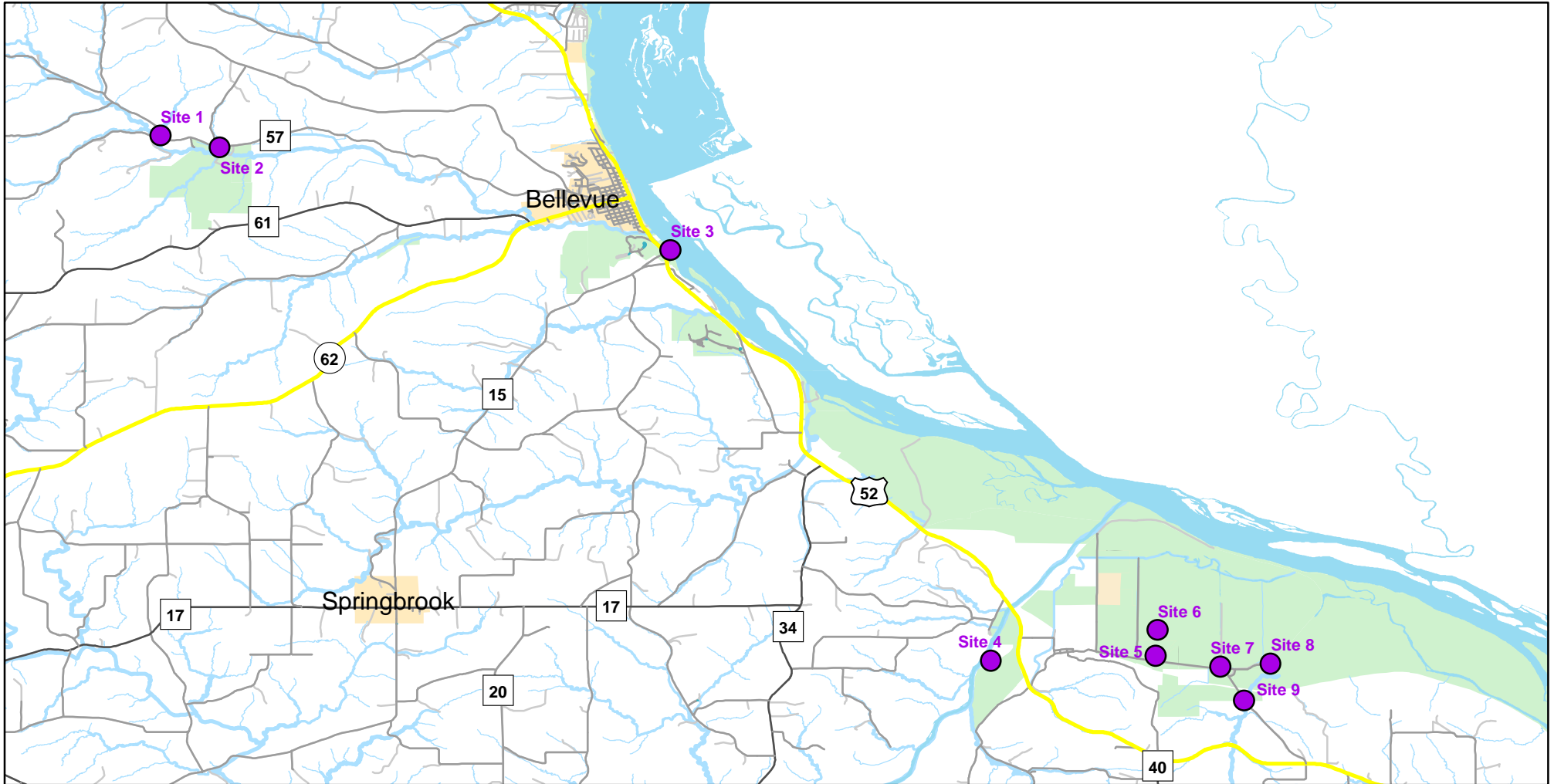




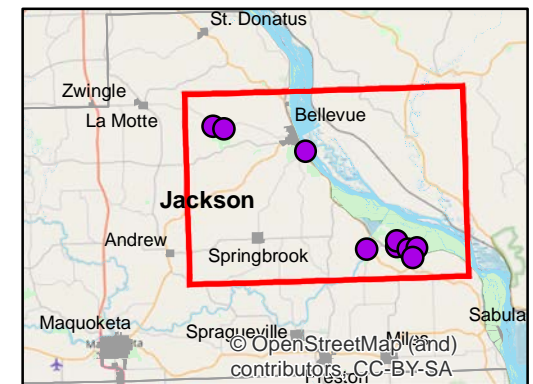
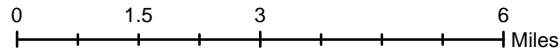
Volunteer Wildlife Monitoring Program (VWMP) Frog

Route ID: 20 County: Jackson

Click for Google Maps to Site 1: <https://www.google.com/maps/dir/?api=1&destination=42.2729355485,-90.5316510432>



Enlarged View of Site 1

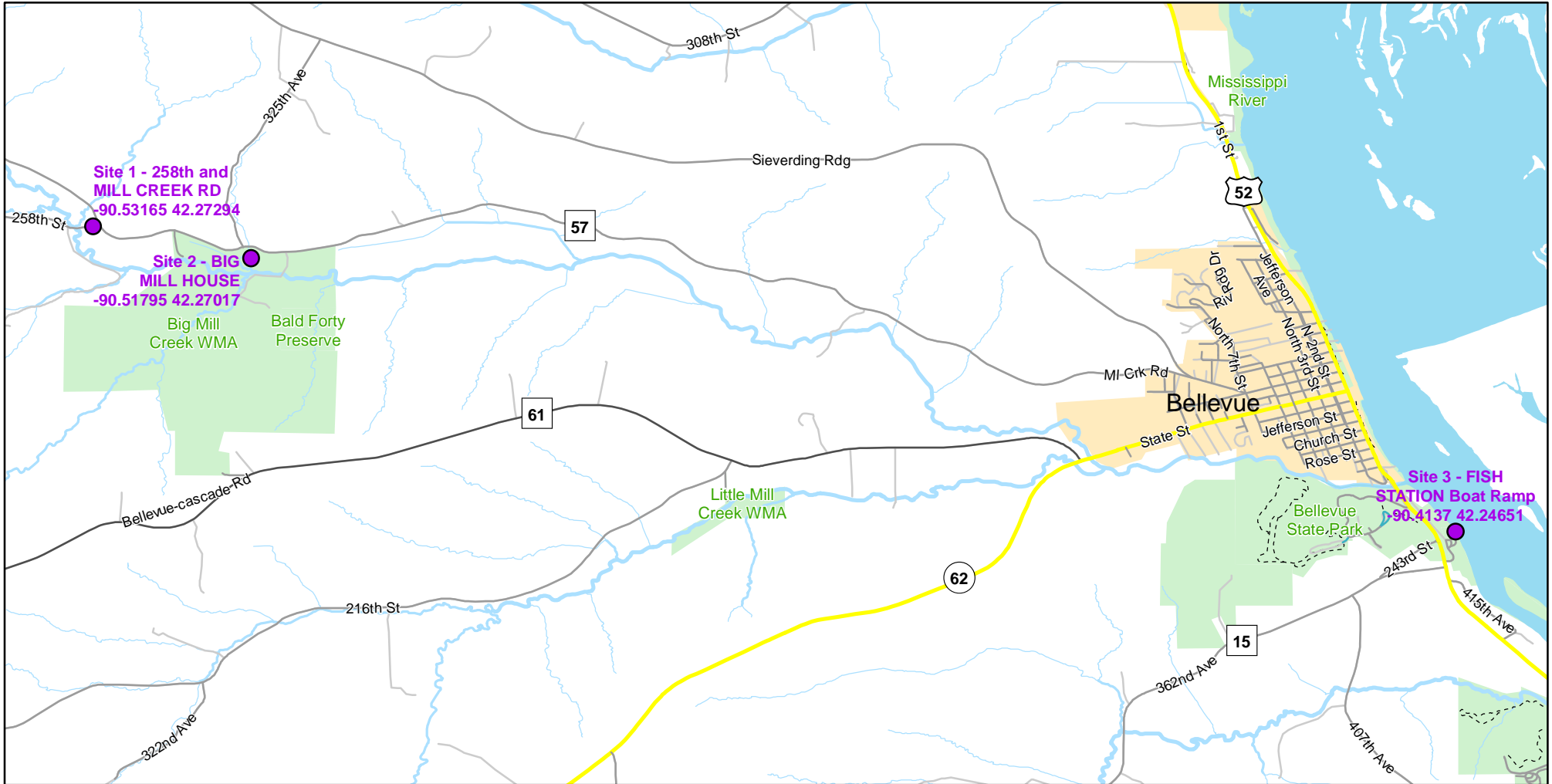




Volunteer Wildlife Monitoring Program (VWMP) Frog

Route ID: 20 County: Jackson

Click for Google Maps to Site 1: <https://www.google.com/maps/dir/?api=1&destination=42.2729355485,-90.5316510432>

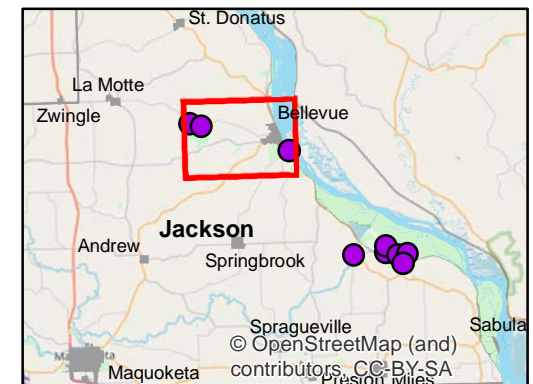
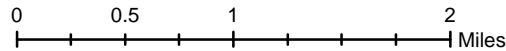


Enlarged View of Site 3



Legend

----- Trails

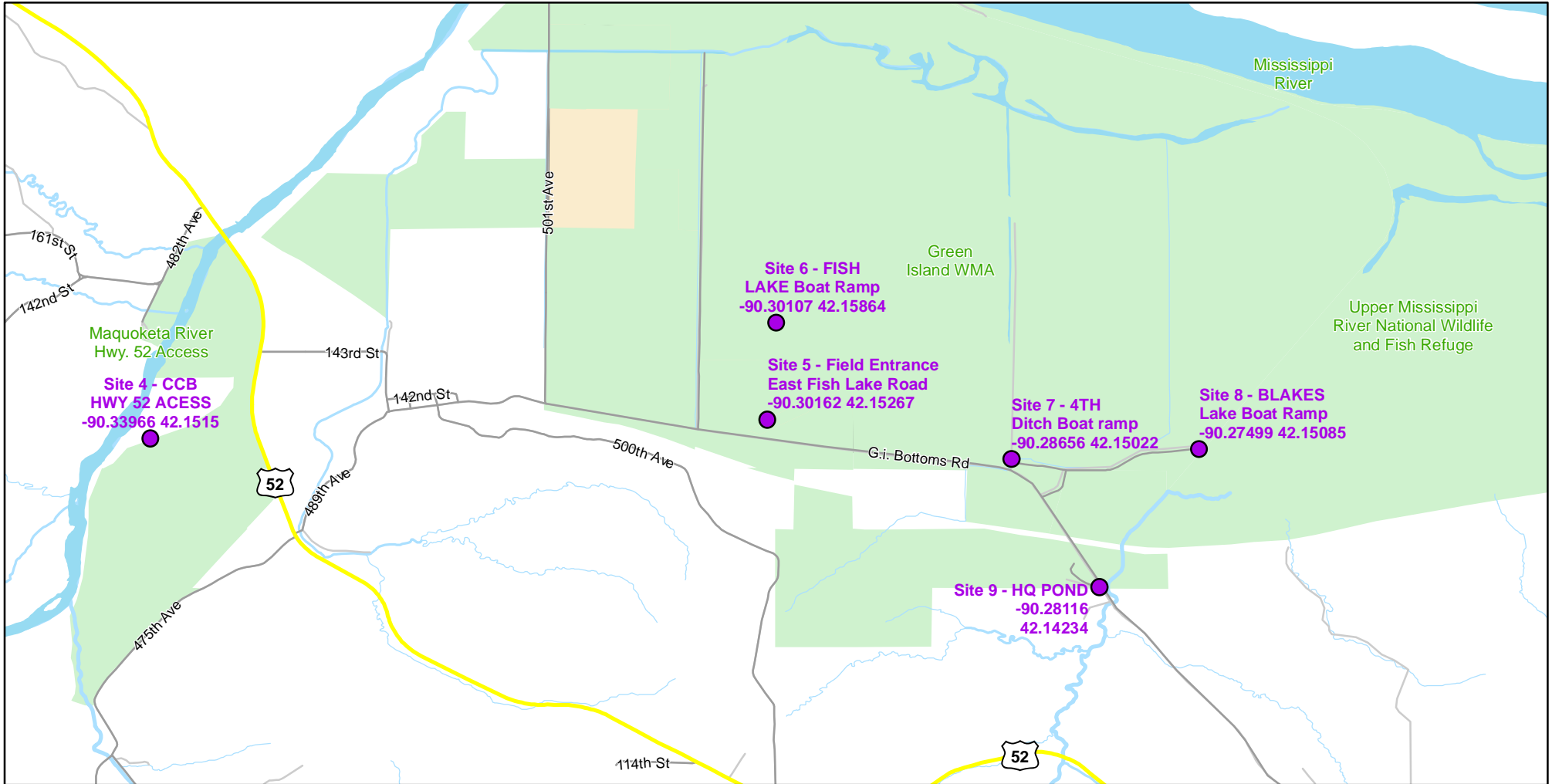




Volunteer Wildlife Monitoring Program (VWMP) Frog

Route ID: 20 County: Jackson

Click for Google Maps to Site 1: <https://www.google.com/maps/dir/?api=1&destination=42.2729355485,-90.5316510432>

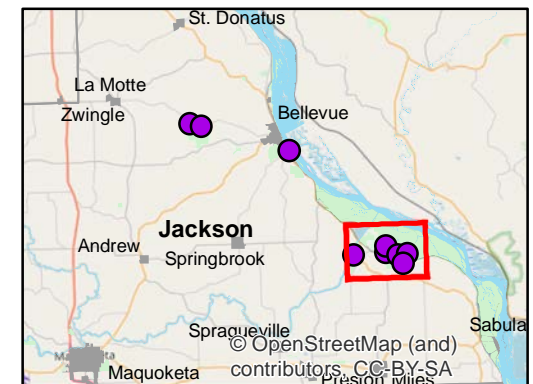
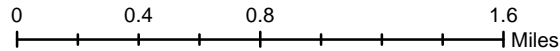


Enlarged View of Site 4



Legend

----- Trails





Frog and Toad Call Survey Route Description

Route ID **20**

Established: 1991

Site Number	Name	County	Latitude	Longitude	Directions
1	258th and MILL CREEK RD	Jackson	42.2729355	-90.531651	
2	BIG MILL HOUSE	Jackson	42.2701722	-90.5179485	
3	FISH STATION Boat Ramp	Jackson	42.2465064	-90.4136956	Boat ramp at fish research/management station on 52, south of Bellevue. SE quarter or NE quarter of section.
4	CCB HWY 52 ACESS	Jackson	42.1514979	-90.3396556	
5	Field Entrance East Fish Lake Road	Jackson	42.1526712	-90.3016171	Field entrance east of Fish Lake Rd. in Green Island Bottom. Sw 1/4 of SE 1/4
6	FISH LAKE Boat Ramp	Jackson	42.1586425	-90.3010728	
7	4TH Ditch Boat ramp	Jackson	42.1502175	-90.2865577	
8	BLAKES Lake Boat Ramp	Jackson	42.1508526	-90.2749853	SW 1/4 of the SW 1/4
9	HQ POND	Jackson	42.1423449	-90.2811586	Pond by Headquarters mailbox. SE 1/4 of the NE 1/4